

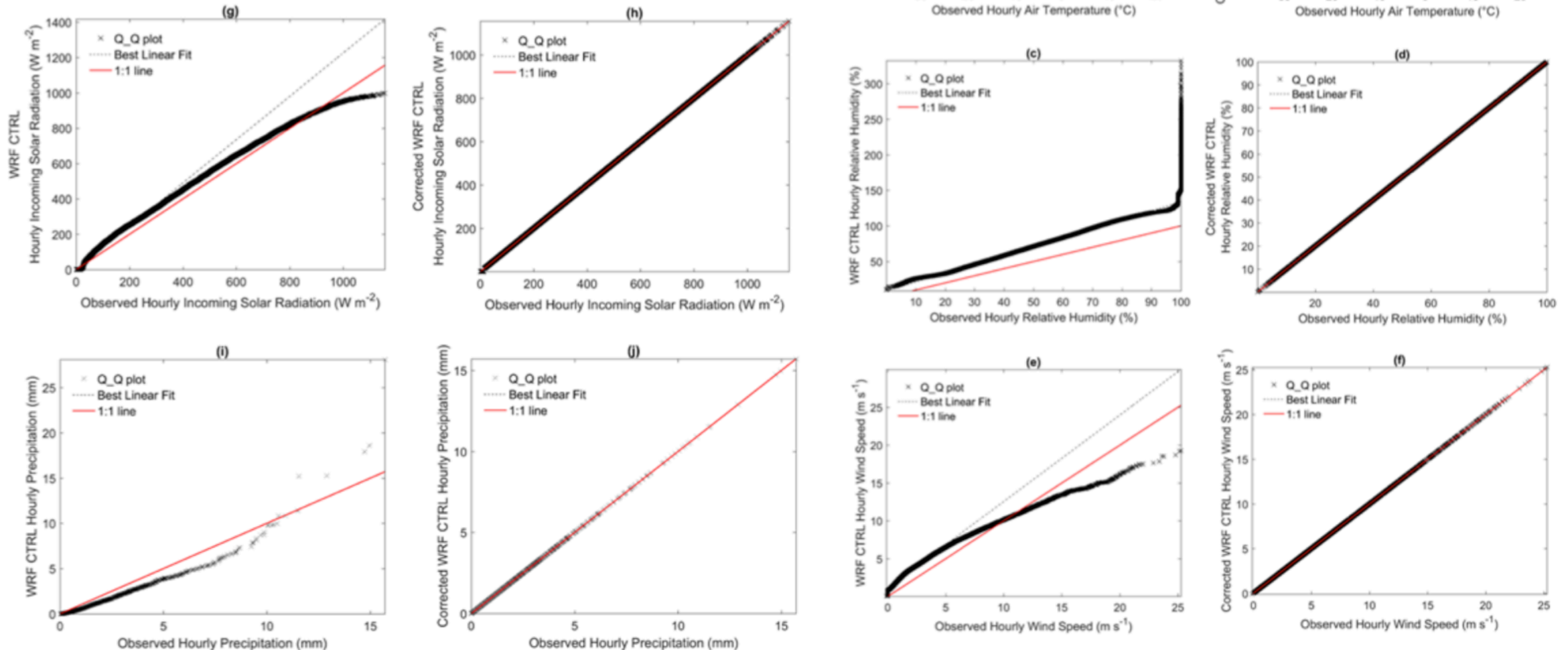
# Diagnosis of future changes in hydrology for a Canadian Rocky Mountain headwater basin

John Pomeroy and Logan Fang

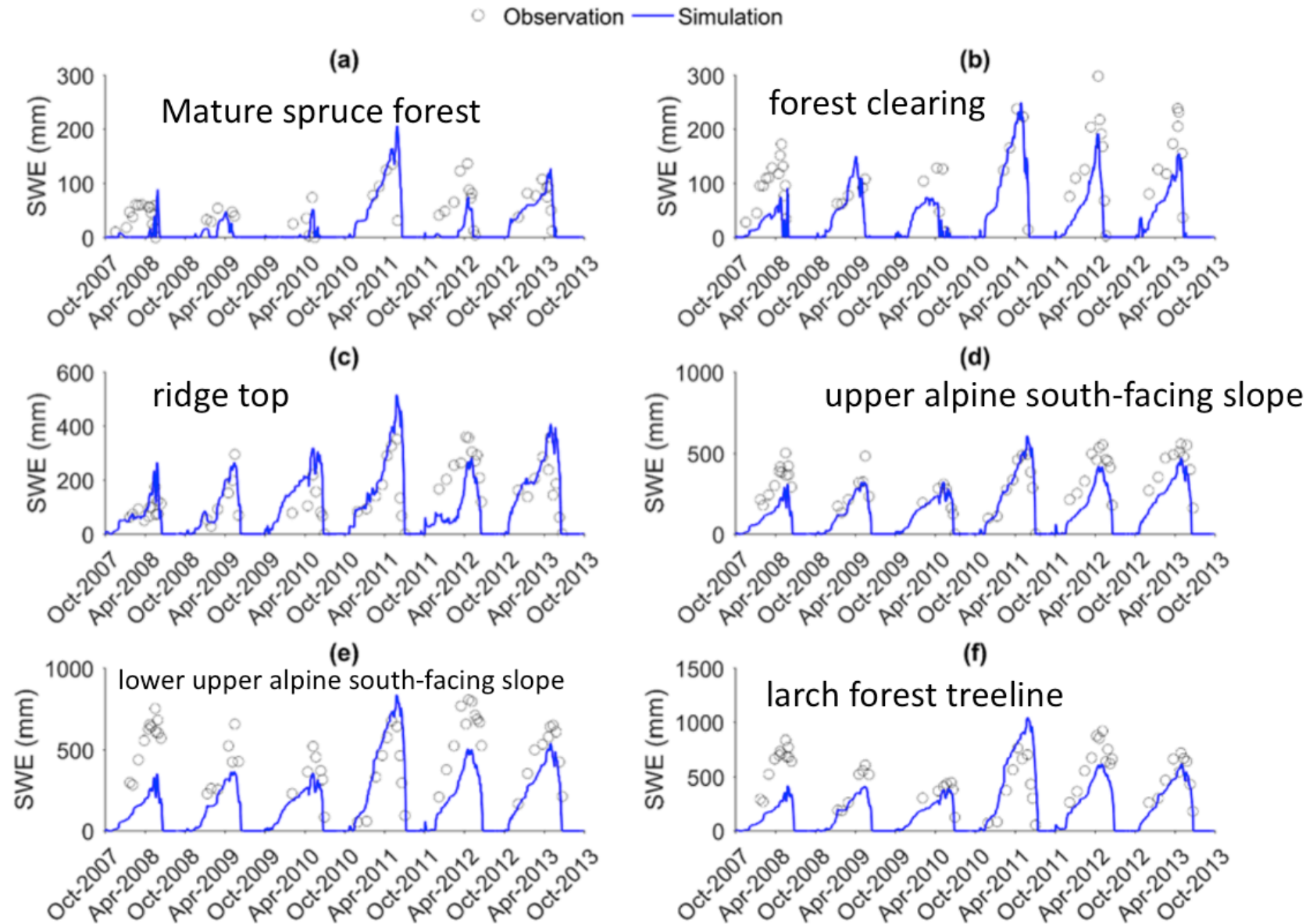
University of Saskatchewan, Canmore, AB

# Marmot Creek -

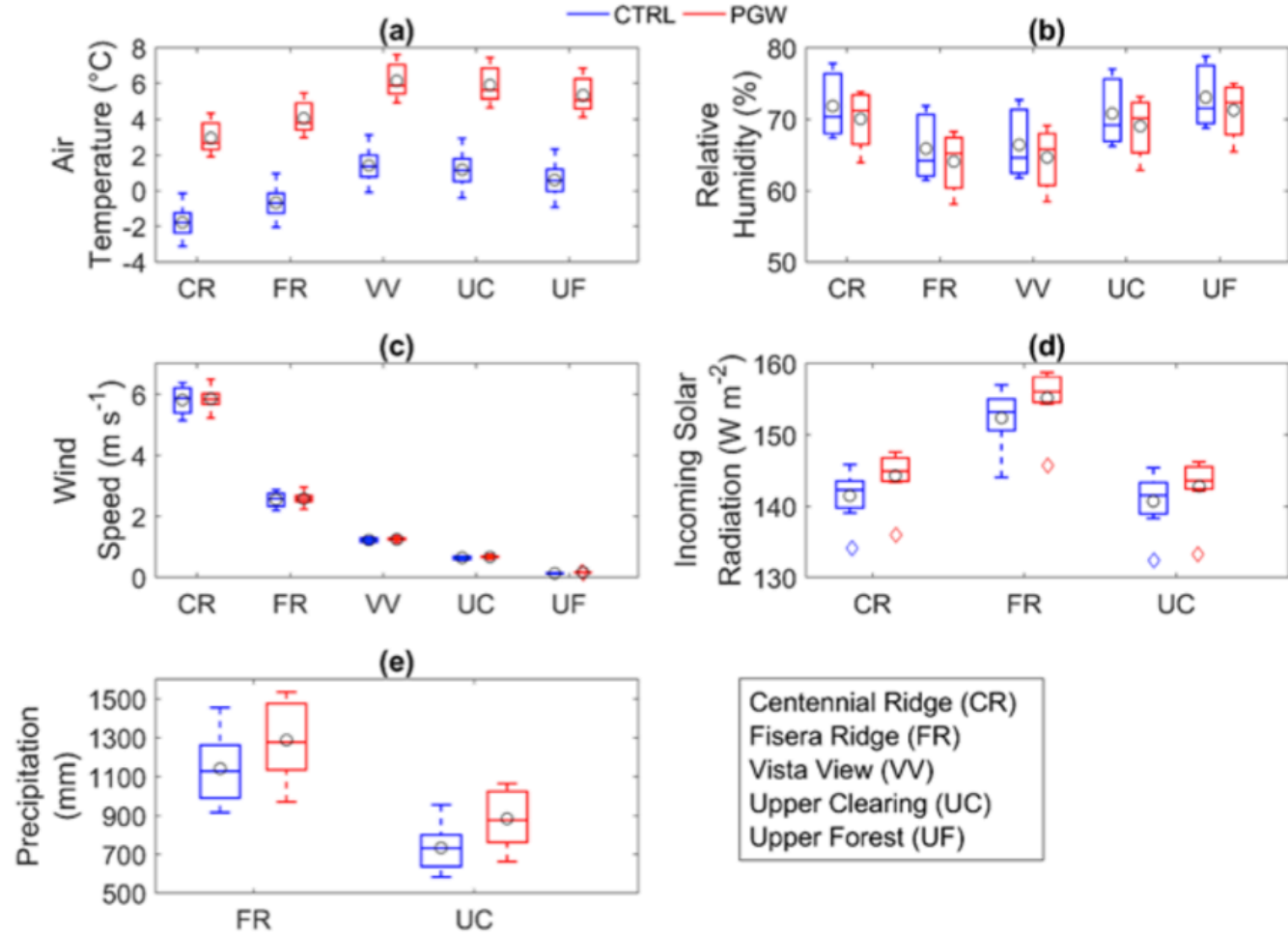
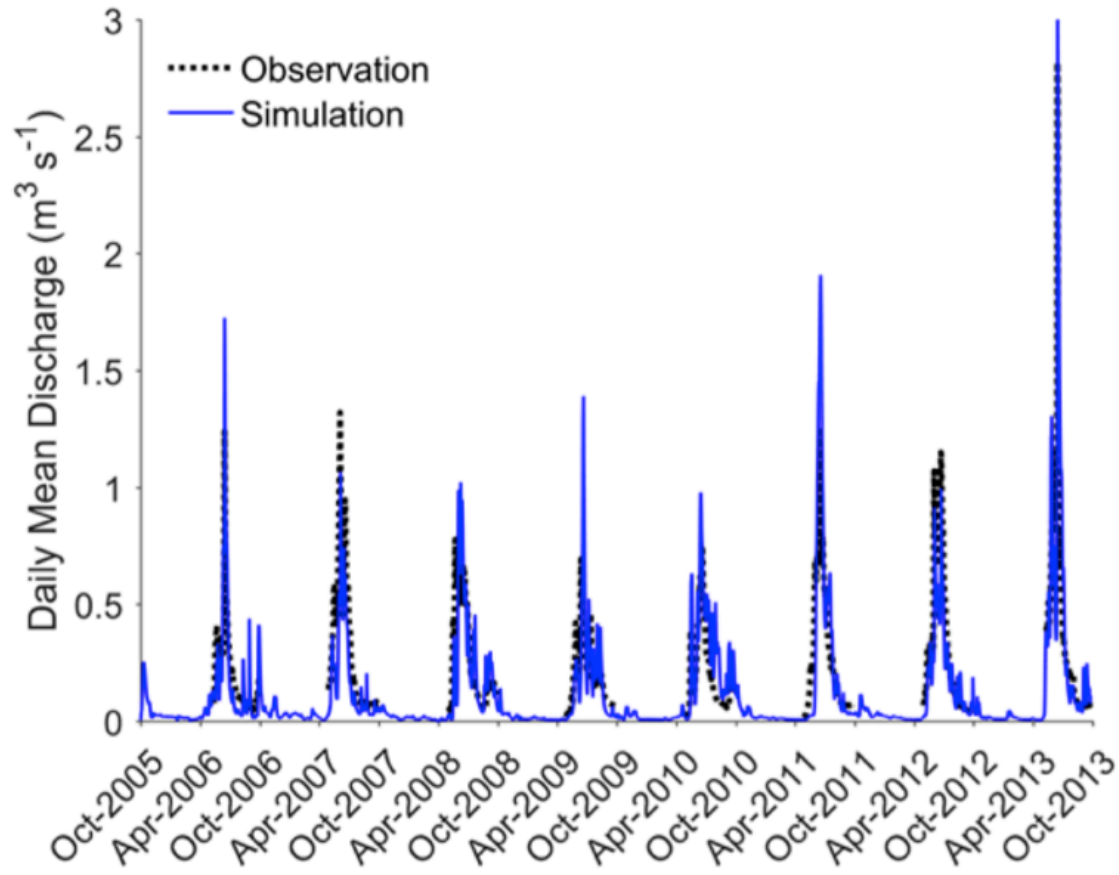
- CRHM model driven with bias corrected WRF 4 km (ERA-Interim)



# WRF-CRHM Snowpack Simulations

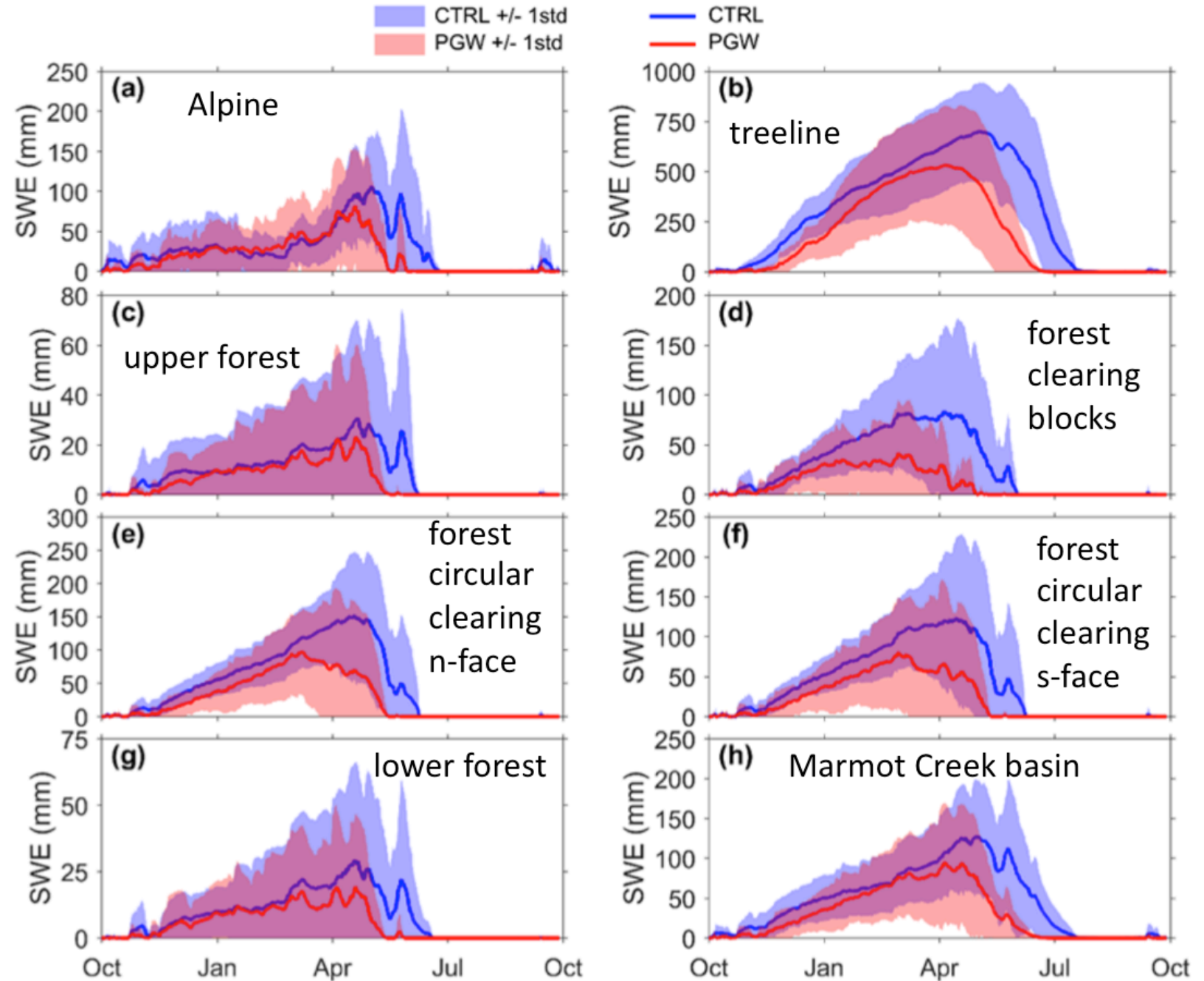


# WRF-CRHM Hydrographs and the Climate Change



Pseudo Global Warming from RCP8.5 average of CMIP Models

# Snow Change with Pseudo Global Warming



# Streamflow Changes – loss of resilience

