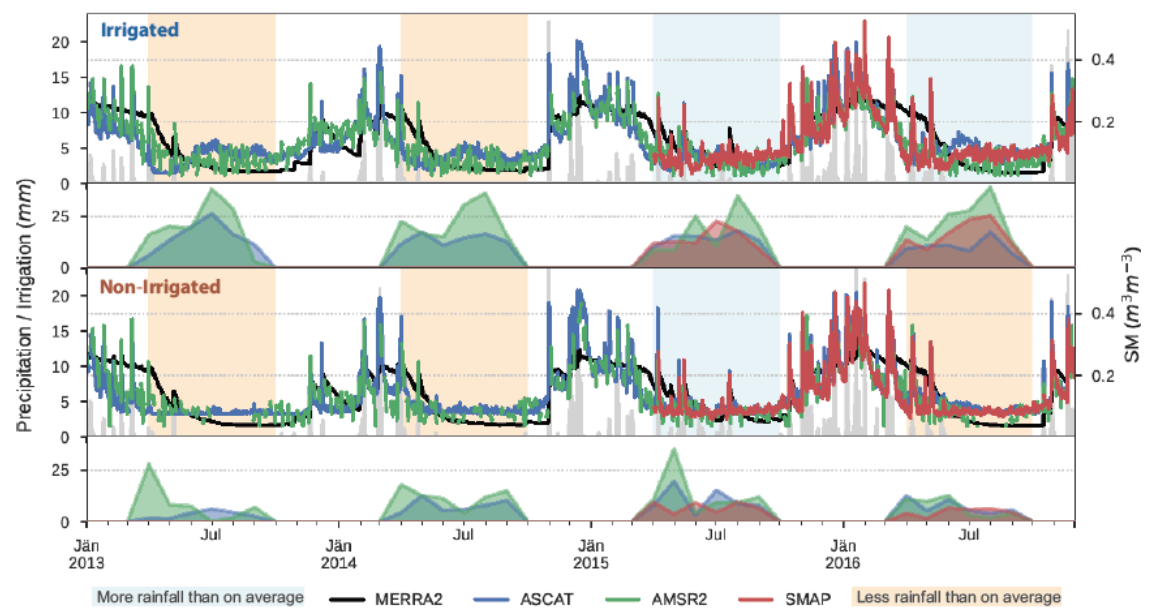


# Mapping irrigated cropland over the contiguous United States by combining satellite and model soil moisture data

- **Goal:** Mapping irrigation areas and *volumes*
- **Methods:** Quantifying the difference between satellite and model-observed soil moisture
- **Data:** satellite observations of soil moisture from SMAP, AMSR2 and ASCAT; model observations from MERRA2



Mirad-US irrigated area

