

Application of software (Solam) for the interpretation of data of geotechnical rainfall stations

Laura Araque, Rodolfo Mendes, Marcio Andrade, Mariana Motta, Cassiano Bortolozo

Email: laura.lavalle@cemaden.gov.br, Rodolfo.mendes@cemaden.gov.br, mariana.motta@cemaden.gov.br, marcio.andrade@cemaden.gov.br, cassiano.bortolozo@cemaden.gov.br

São José dos Campos, São Paulo, Brazil

Estrada Dr. Altino Bondensan, 500 - Coqueiro, 12247-016

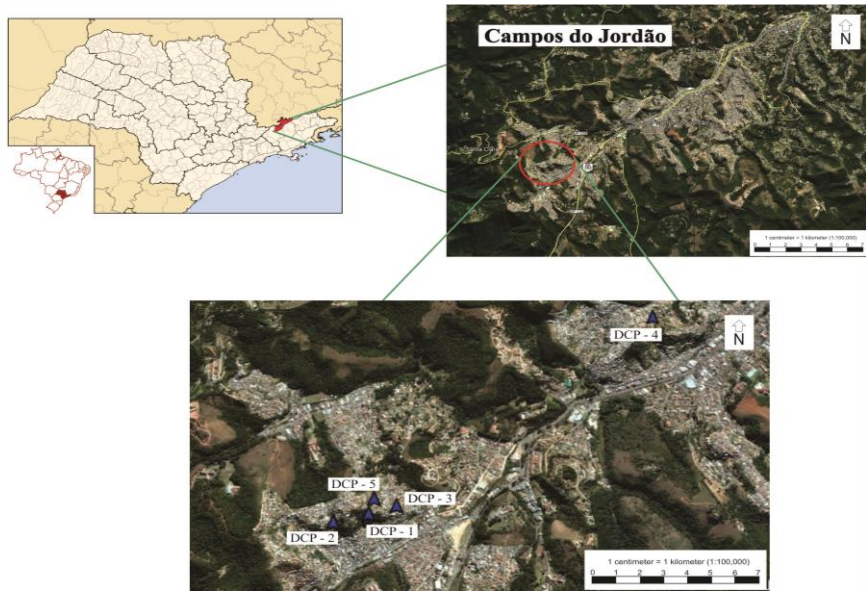


Figure 2. Localization Campos do Jordão and Data Collection Platform (DCP).

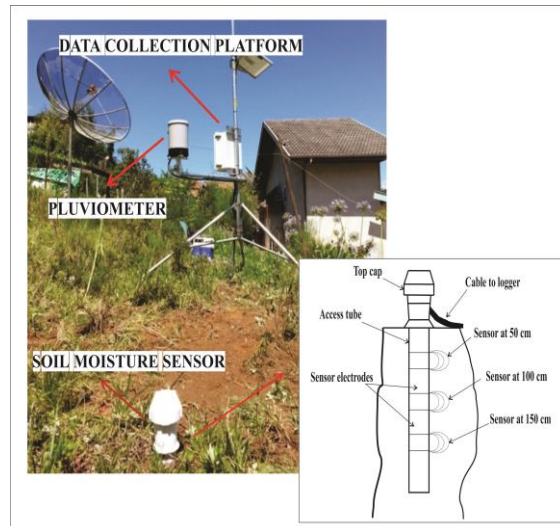


Figure 1. Data Collection Platform. Profile sensor soil moisture.

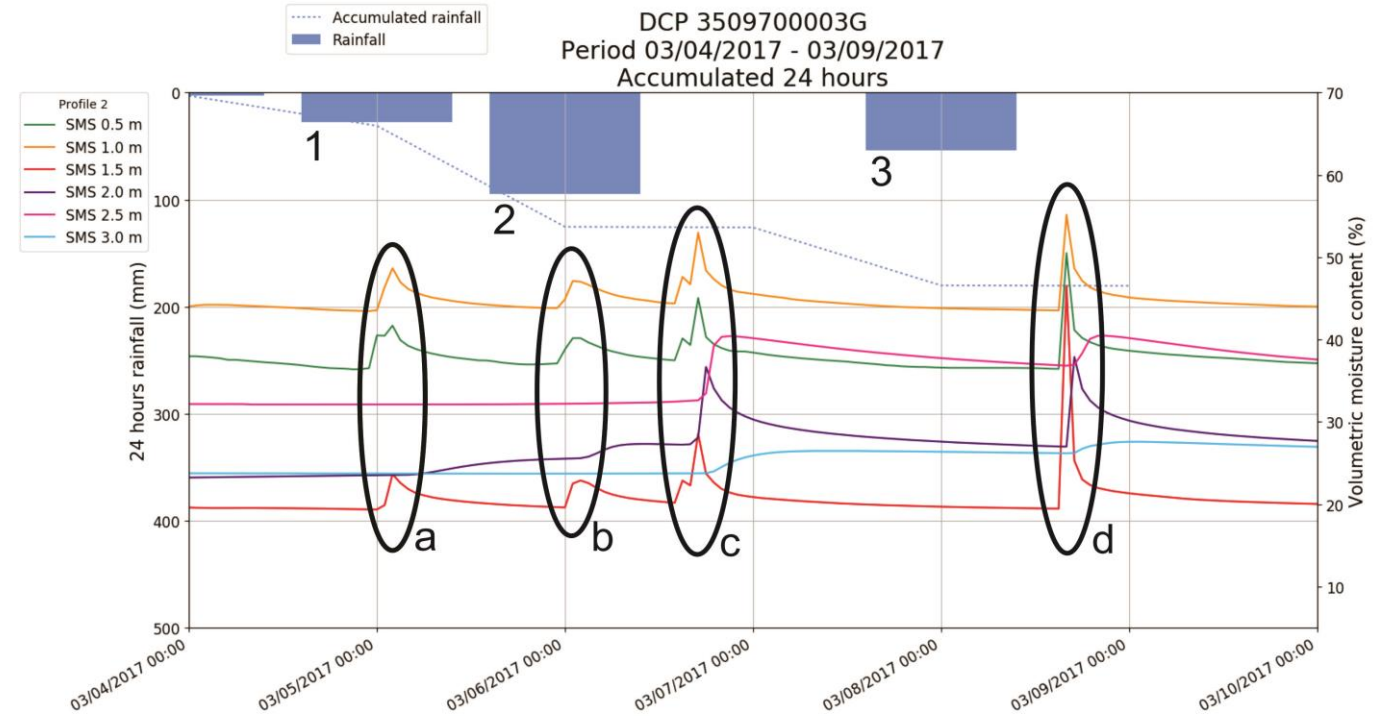


Figure 3. Graph generated by Solam Integrated Analysis Software. (SMS: Soil Moisture Sensor)