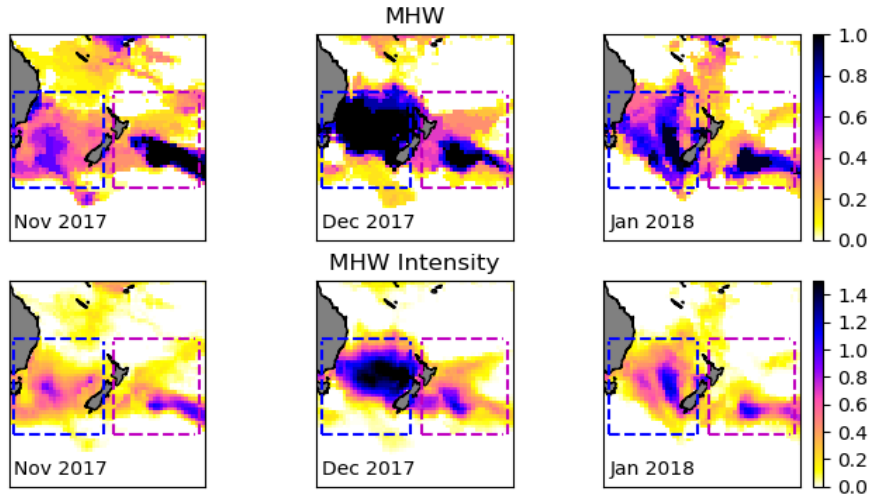


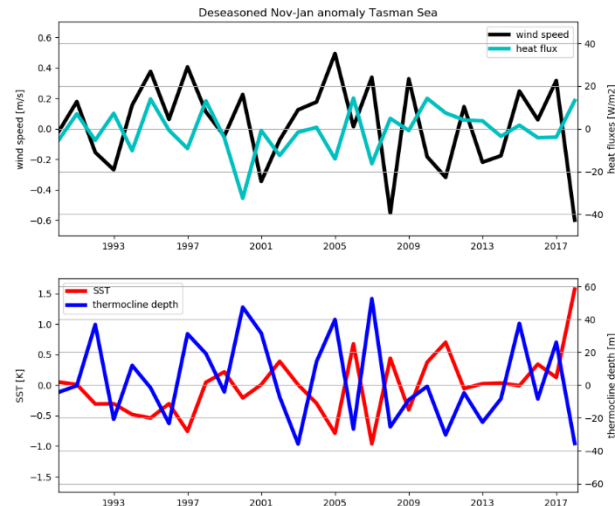
Marine heat waves around New Zealand – How does meridional heat transport affects them? Erik Behrens, NIWA Poster location C7

MHW 2017/2018

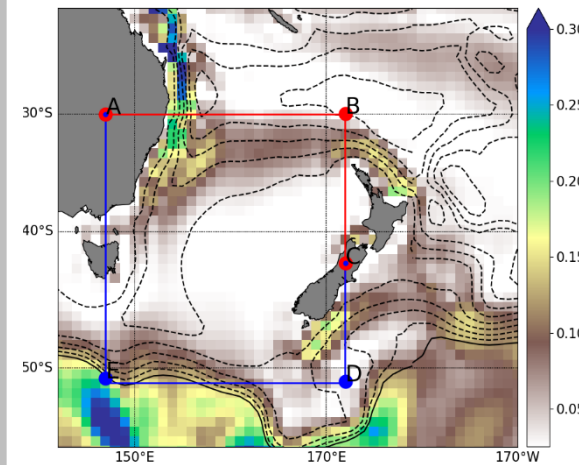


The 2017/18 MHW was caused by a persistent blocking high east of NZ.

Low winds, low vertical mixing, surface warming.



Meridional heat transport and Tasman HTC



There is long-term variability in the occurrence of MHW, which is highly linked to HTC in this region and driven by variability of the boundary current.

Wind speed along can not explain MHW alone, the background state matters too

