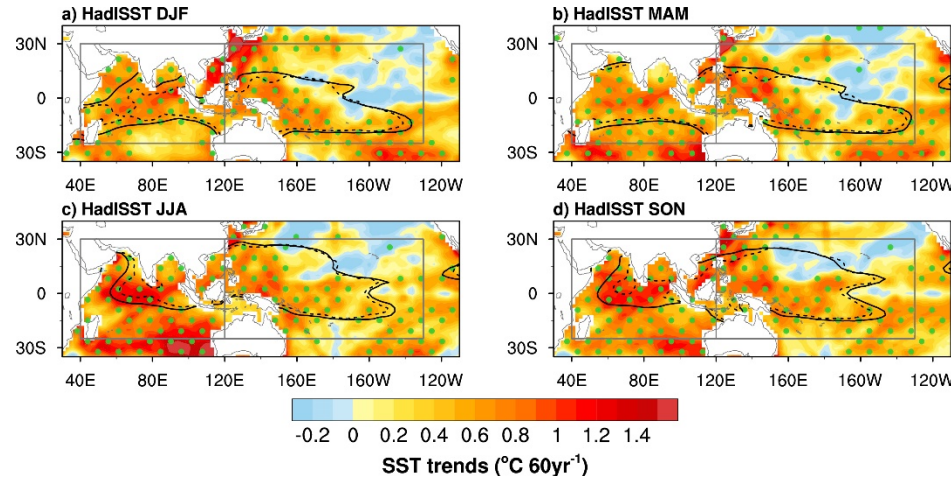
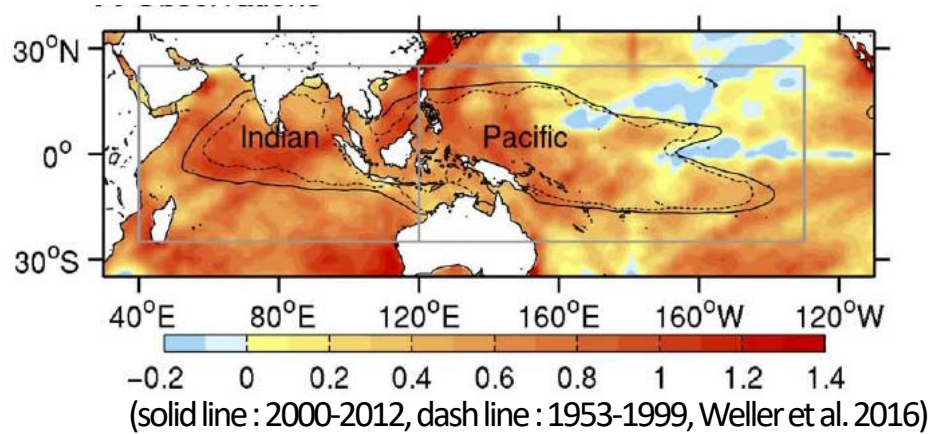


Attribution of the Indo-Pacific warm pool expansion: Seasonal changes

In-Hong Park and Seung-Ki Min (Division of Environmental Science and Engineering, POSTECH)



60yr	Indo-Pacific	Indian Ocean	Pacific Ocean
Intensity	0.30 $^{\circ}\text{C}$	0.34 $^{\circ}\text{C}$	0.33 $^{\circ}\text{C}$
Area	32.2%	51.2%	21.6%

Key Questions

[Q1] **Which season and which basin**

dominate the IPWP expansion?

[Q2] How will the IPWP expansion

affect rainfall?

For answers,

come to my poster → →

B-2

- Greenhouses gas forcing is the dominant cause of the observed IPWP expansion
- (Weller et al. 2016, *Science Advances*)