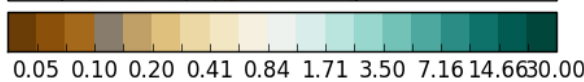
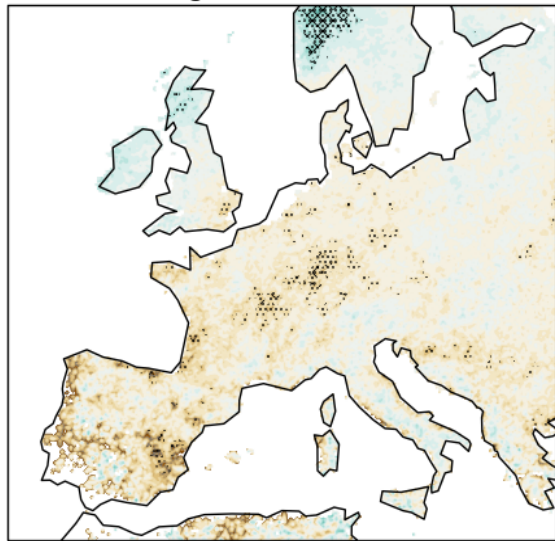


Extreme precipitation in Europe-wide 2.2km simulations: hindcast performance and future changes

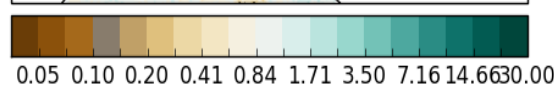
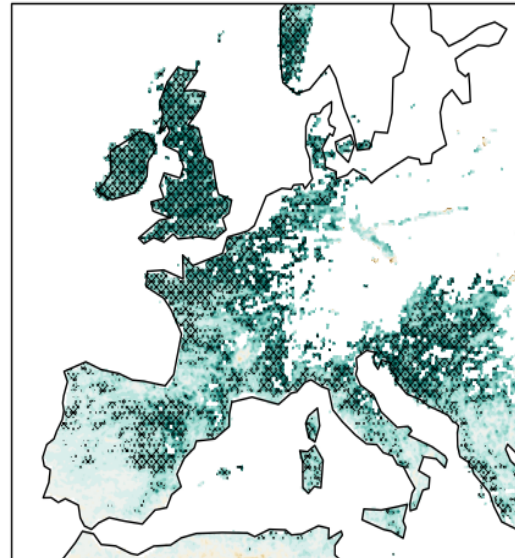
JJA: One of the seasons with higher number of hourly extremes; future projected change is relatively small

DJF: Cold season when significant frequency increases are found

Fractional change relative to current climate



Fractional change relative to current climate



- What is shown: model projected future frequency changes (future/current) in exceeding current climate annual “hourly extreme” threshold during JJA and DJF
- JJA: Convection season for central and northern Europe; see increases in northern Europe only
- DJF: non-convective precipitation season, yet see much clearer increase in hourly extremes

Future / current climate frequency exceeding 6 event/yr threshold:

Hashed area indicate changes exceeding the 5% level