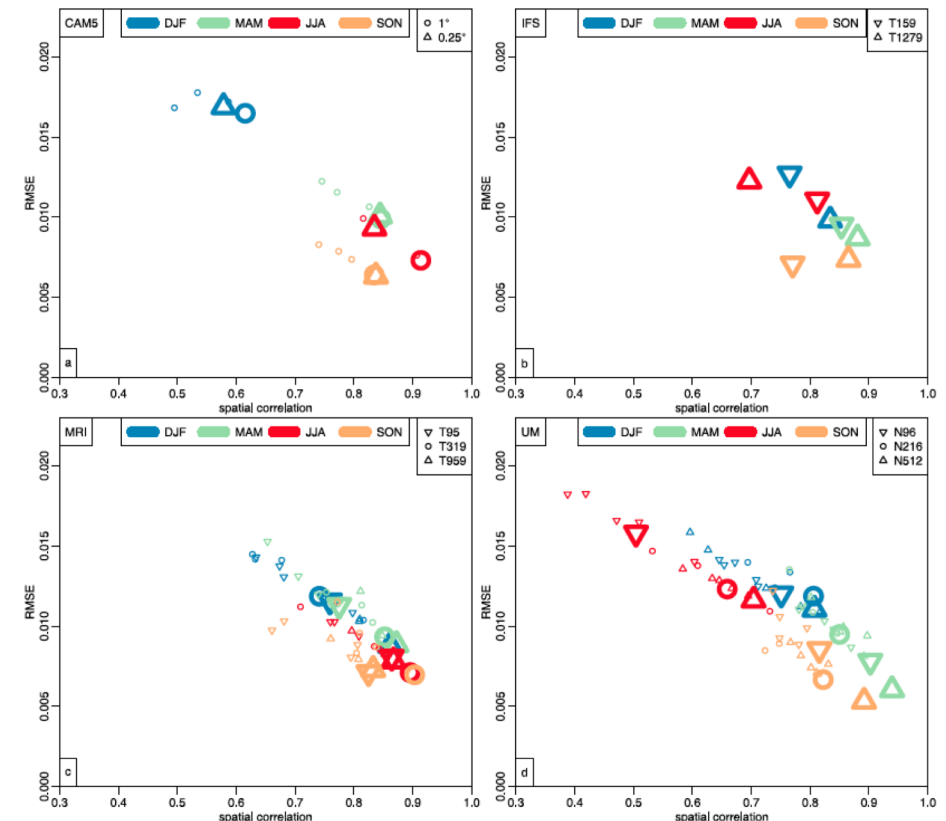


# Representation of **blocking** in the PRIMAVERA ensemble of high-resolution global climate models

Reinhard Schiemann, Panos Athanasiadis, Pier Luigi Vidale

- not enough blocking in climate models (long-standing problem)
- resolution increases previously shown to alleviate, but not fully solve, this problem
- here, take advantage of **new high-resolution PRIMAVERA (CMIP6-HighResMIP) simulations**
  - multi-model
  - coupled (atmosphere-ocean-land-sea ice)
  - controlled resolution increases
  - centennial simulations
- re-evaluate blocking, in particular role of coupling and interannual to decadal variability

Poster A-33



*Blocking biases in an AMIP ensemble (Schiemann et al. 2017).*